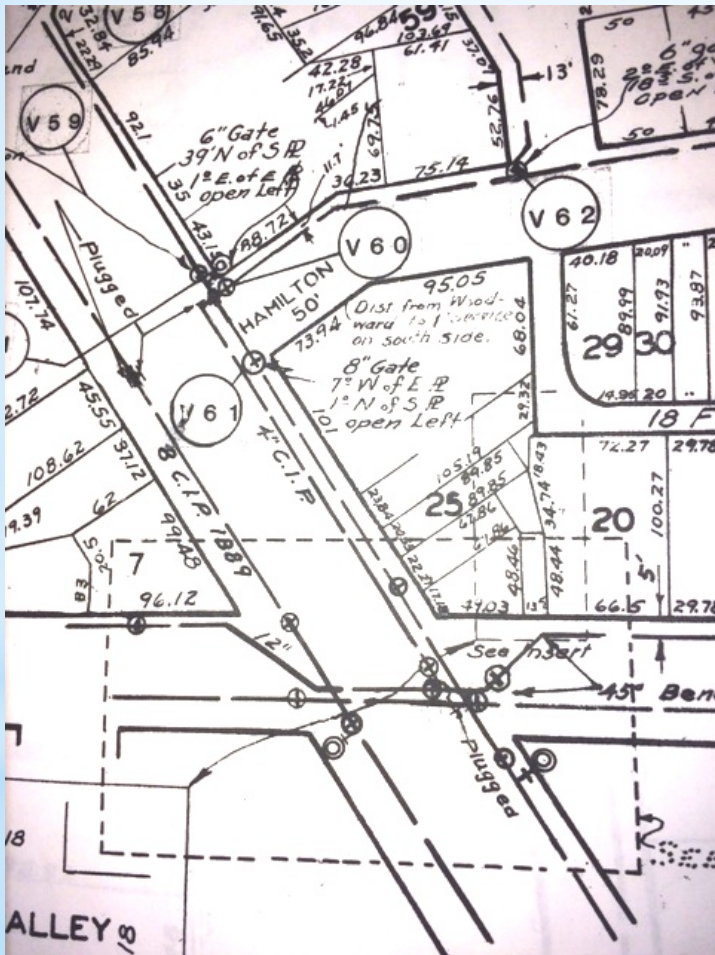


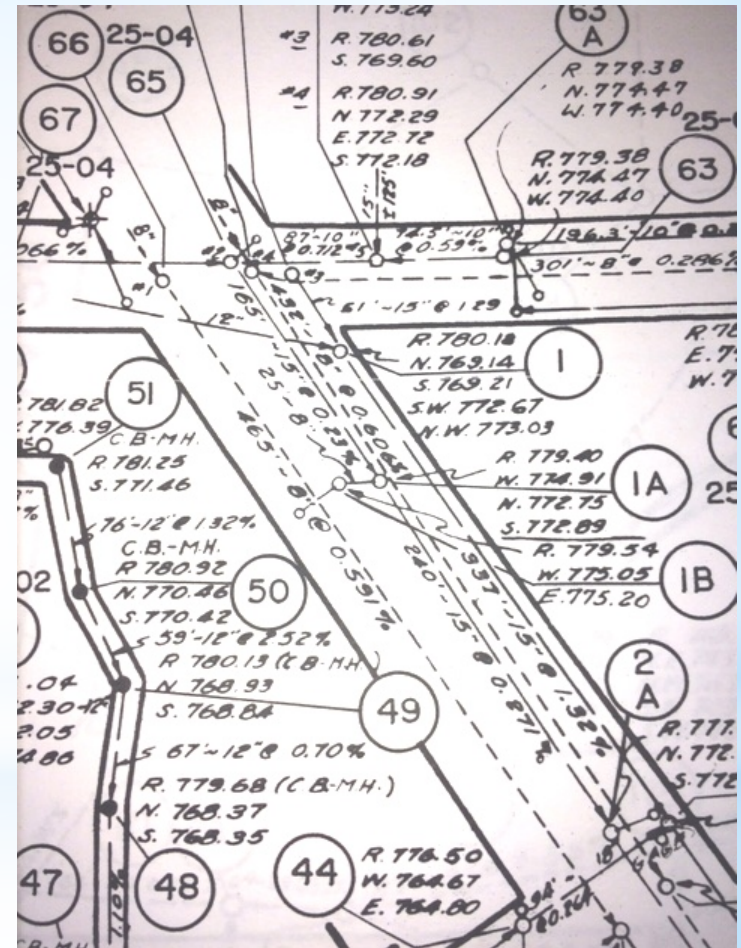
# Old Woodward Ave. Reconstruction Project 2017



# WHY?

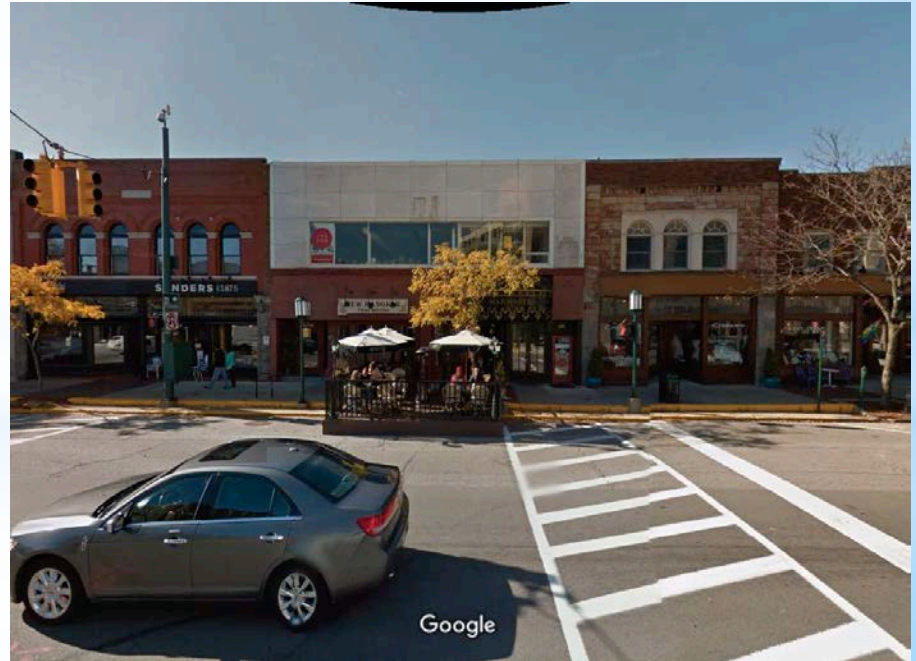


WATER



SEWER

# WHY?





# WHY?



# WHY?

## DOWNTOWN BIRMINGHAM 2016 MASTER PLAN

- \* Narrowed Streets
- \* New Consistent Sidewalks
- \* New Street Lights
- \* Upgraded, Consistent Amenities
- \* Downtown Projects
  - \* 2004 - Brown St. Plaza
  - \* 2005 - Willits Alley
  - \* 2008 - Maple & Chester Plaza
  - \* 2008 - Old Woodward & Oakland Plaza
  - \* 2009 - Pierce St./Townsend St.
  - \* 2009 - Shain Park
  - \* 2010 - Streets Around Shain Park
  - \* 2013 - Pierce St./Merrill St.
  - \* 2015 - Hamilton Alley
  - \* 2015 - Martin St. at Chester St. Structure
  - \* 2016 - Hamilton Ave./Park St.



Upcoming Projects:

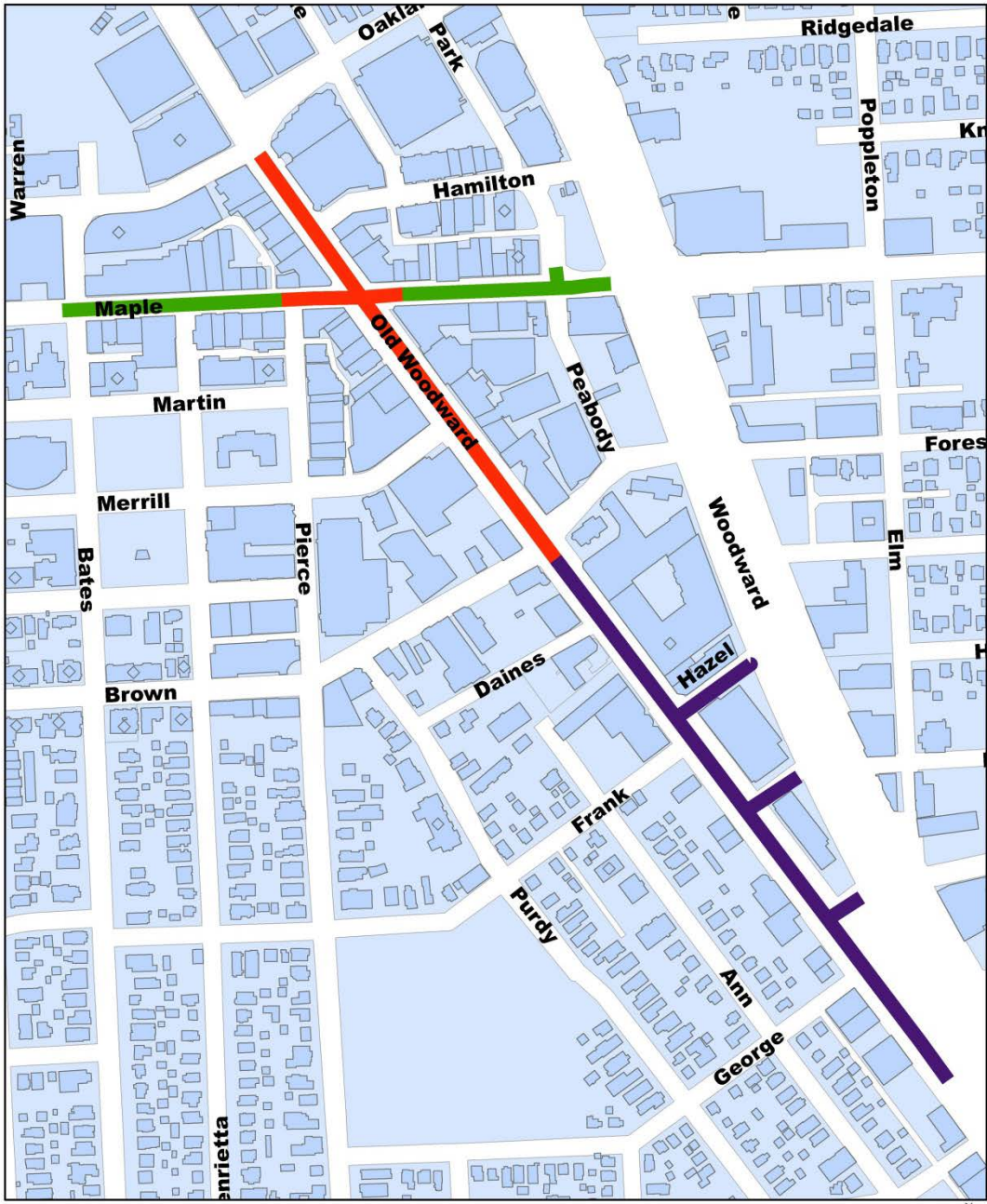
2017





Upcoming Projects:

2019



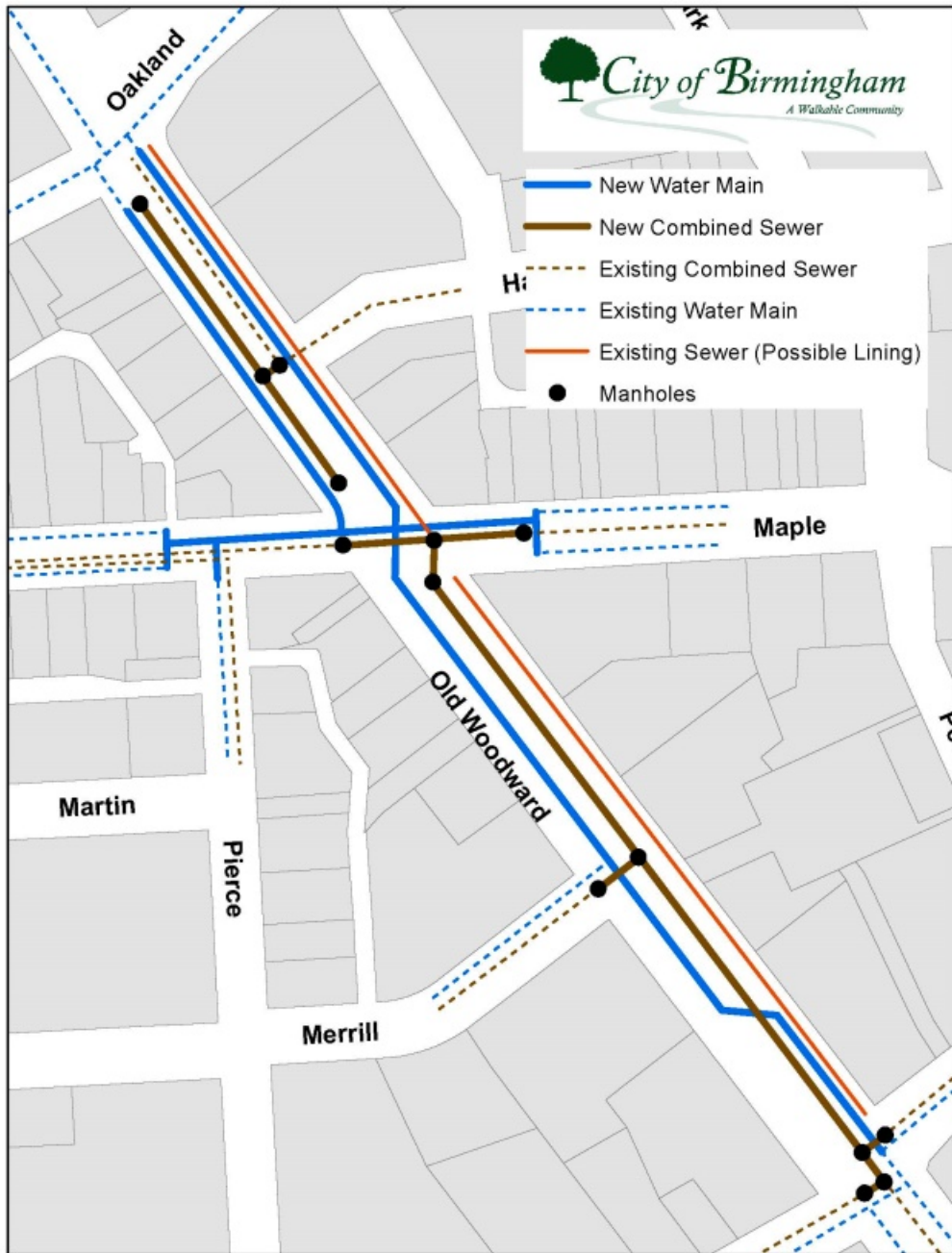
Upcoming Projects:

2021

Phase 1 Phase 2 Phase 3

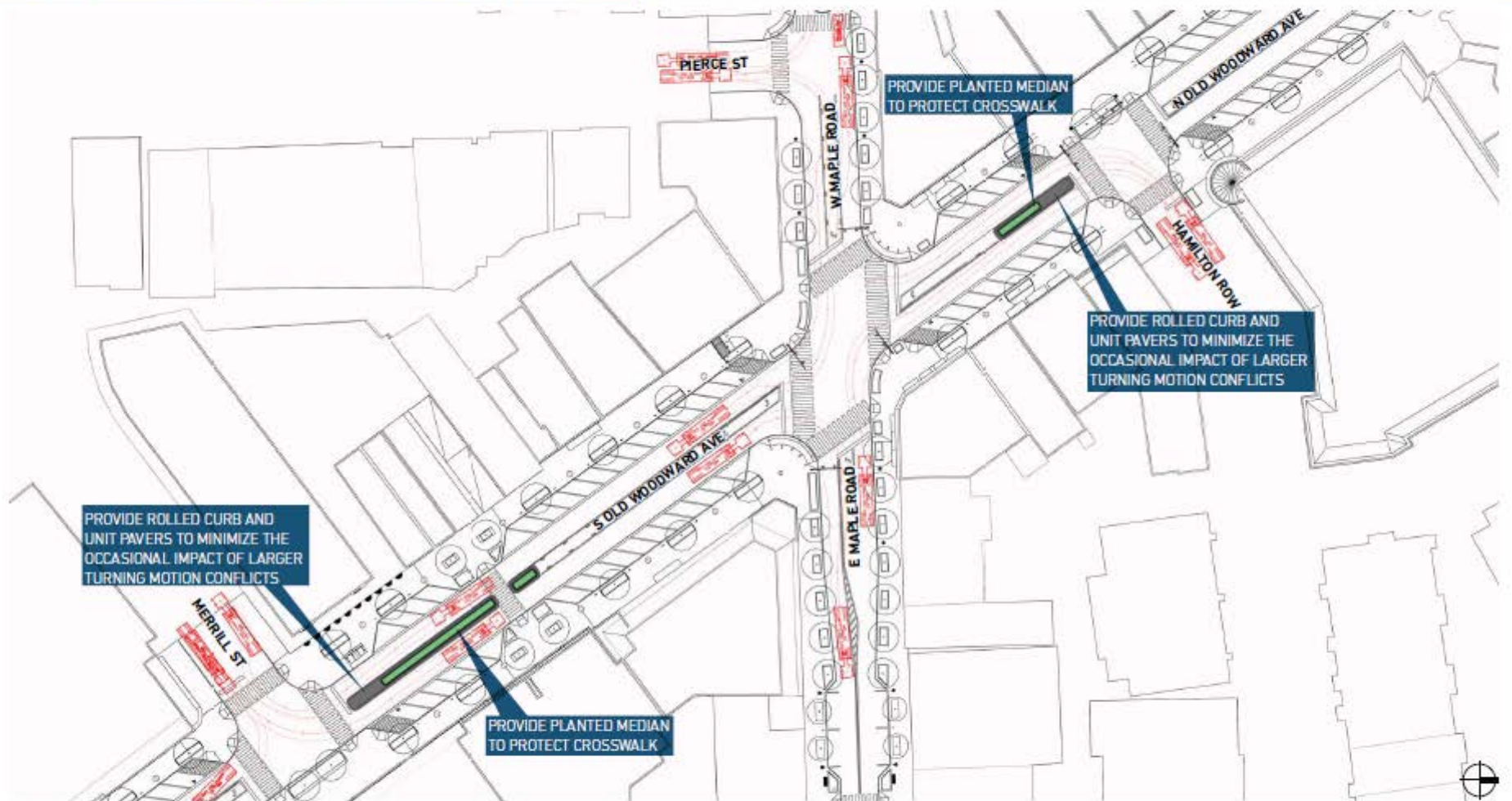
0 250 500 Feet





# Underground Improvements

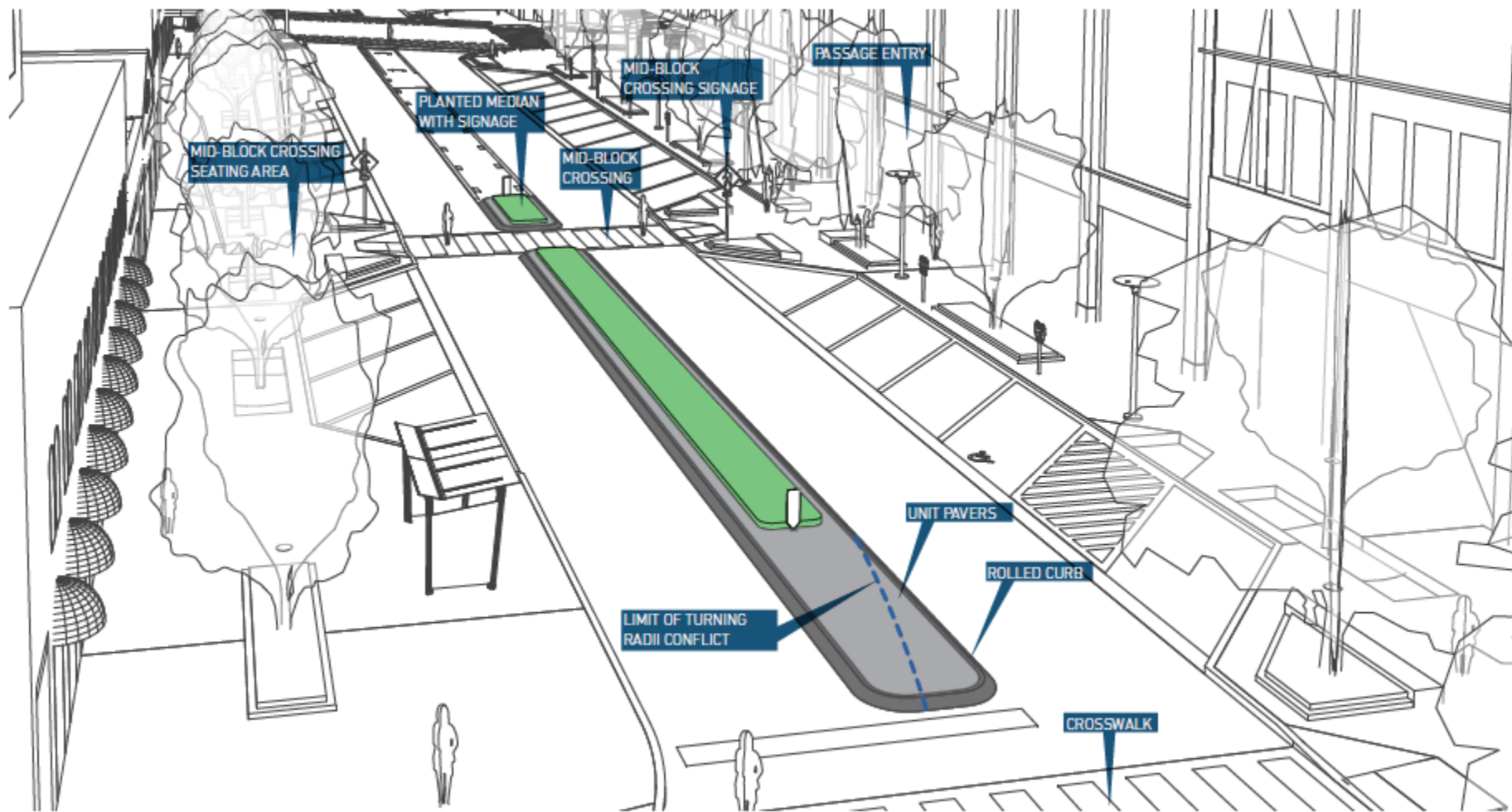
- Water
- Sewer
- Street Lights
- Traffic Signals
- Irrigation
- Electrical
- Communications





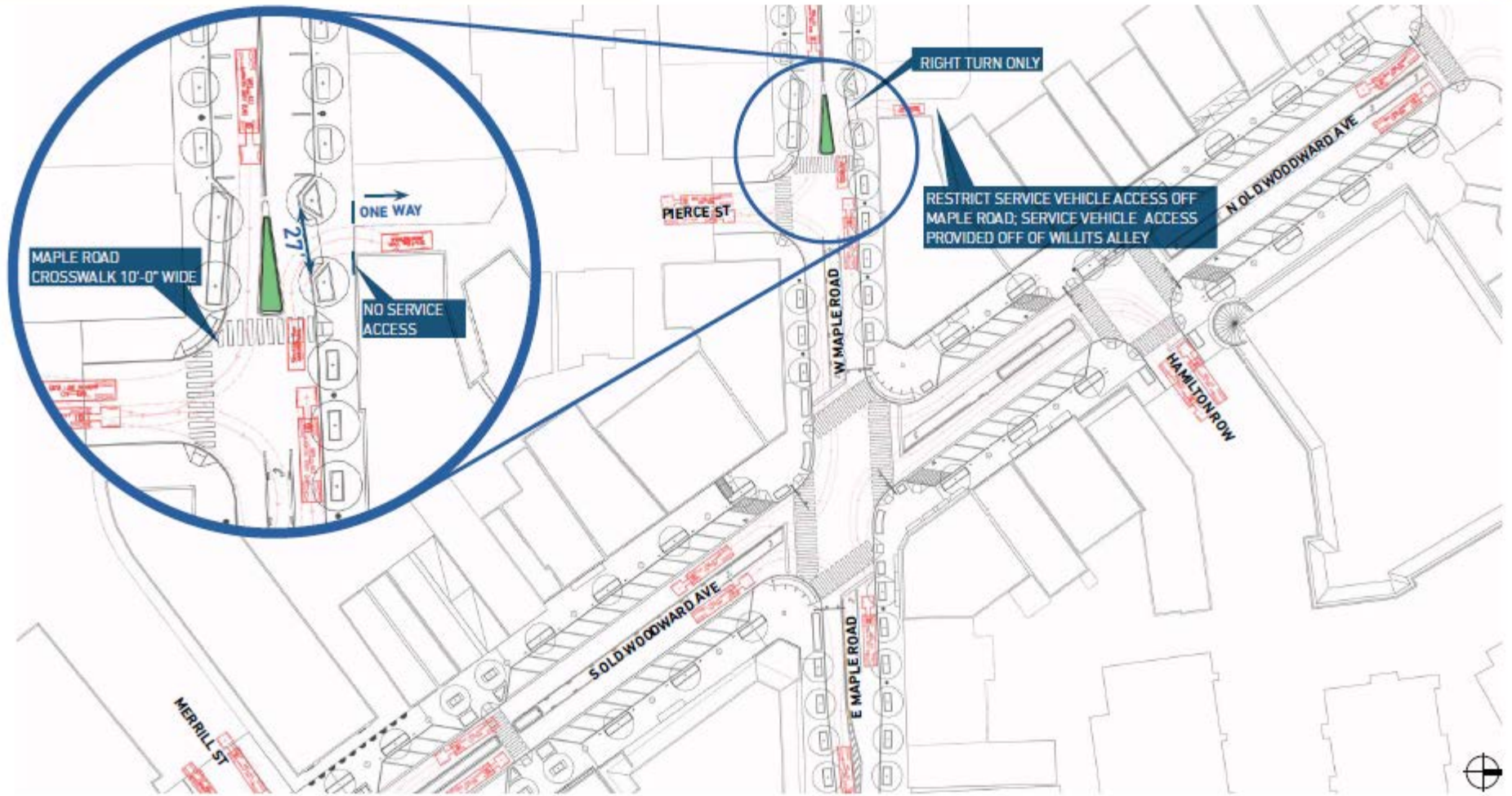
# Recommended Street Section

Phase II | Center Medians | Old Woodward Ave & Merrill Street



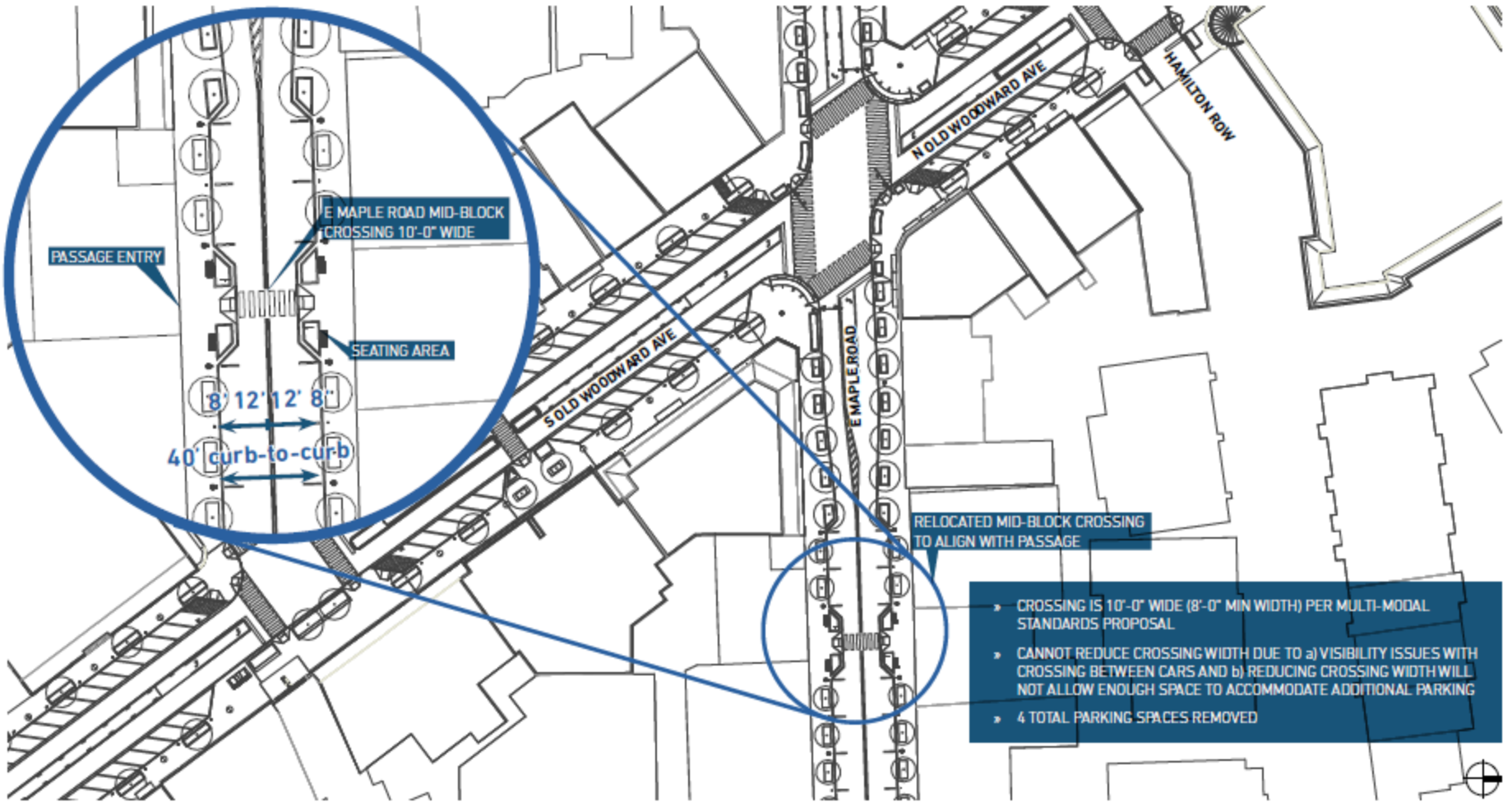
# Recommended Street Section

## Phase II | Alley Access | Maple Road



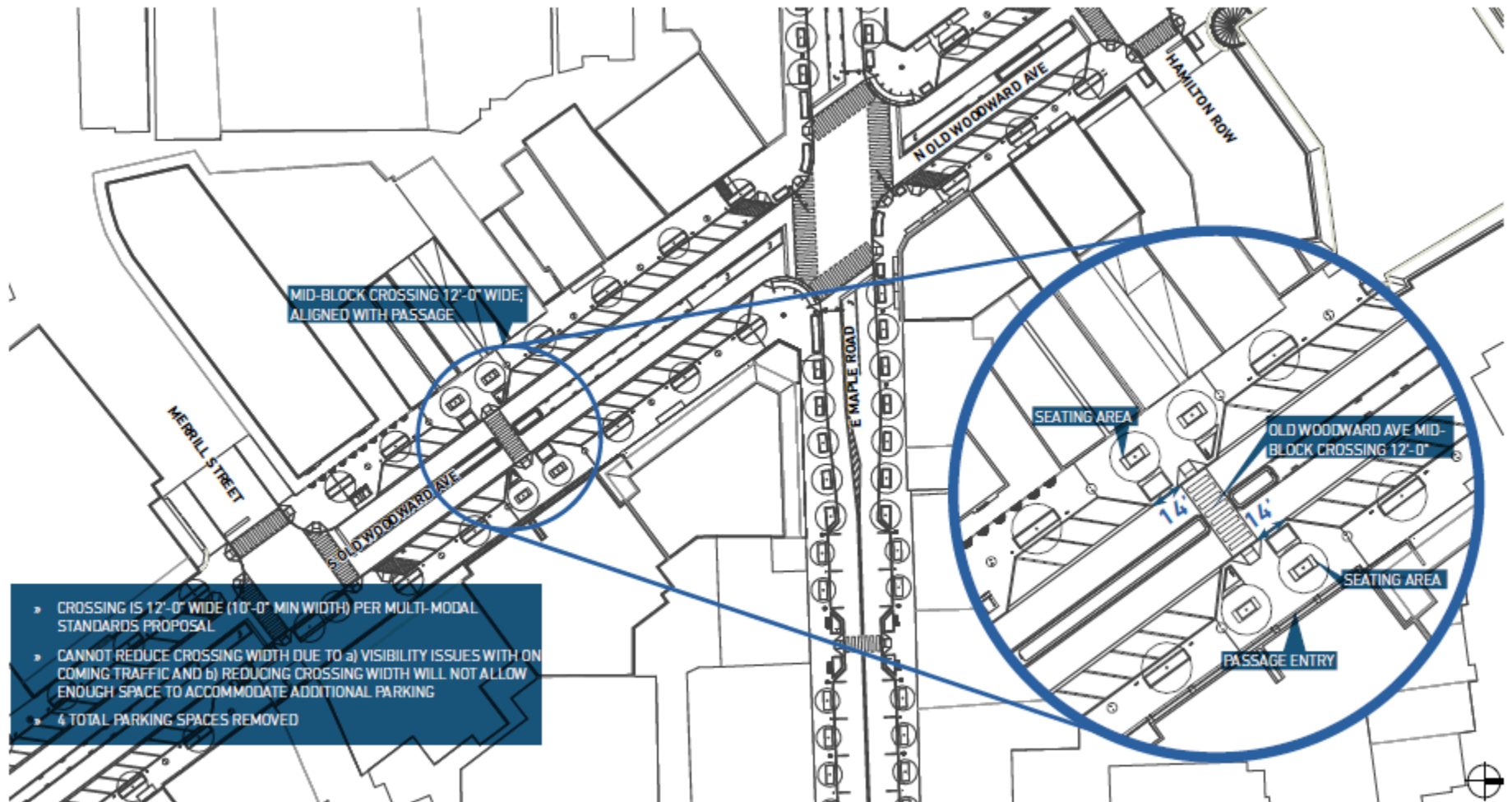






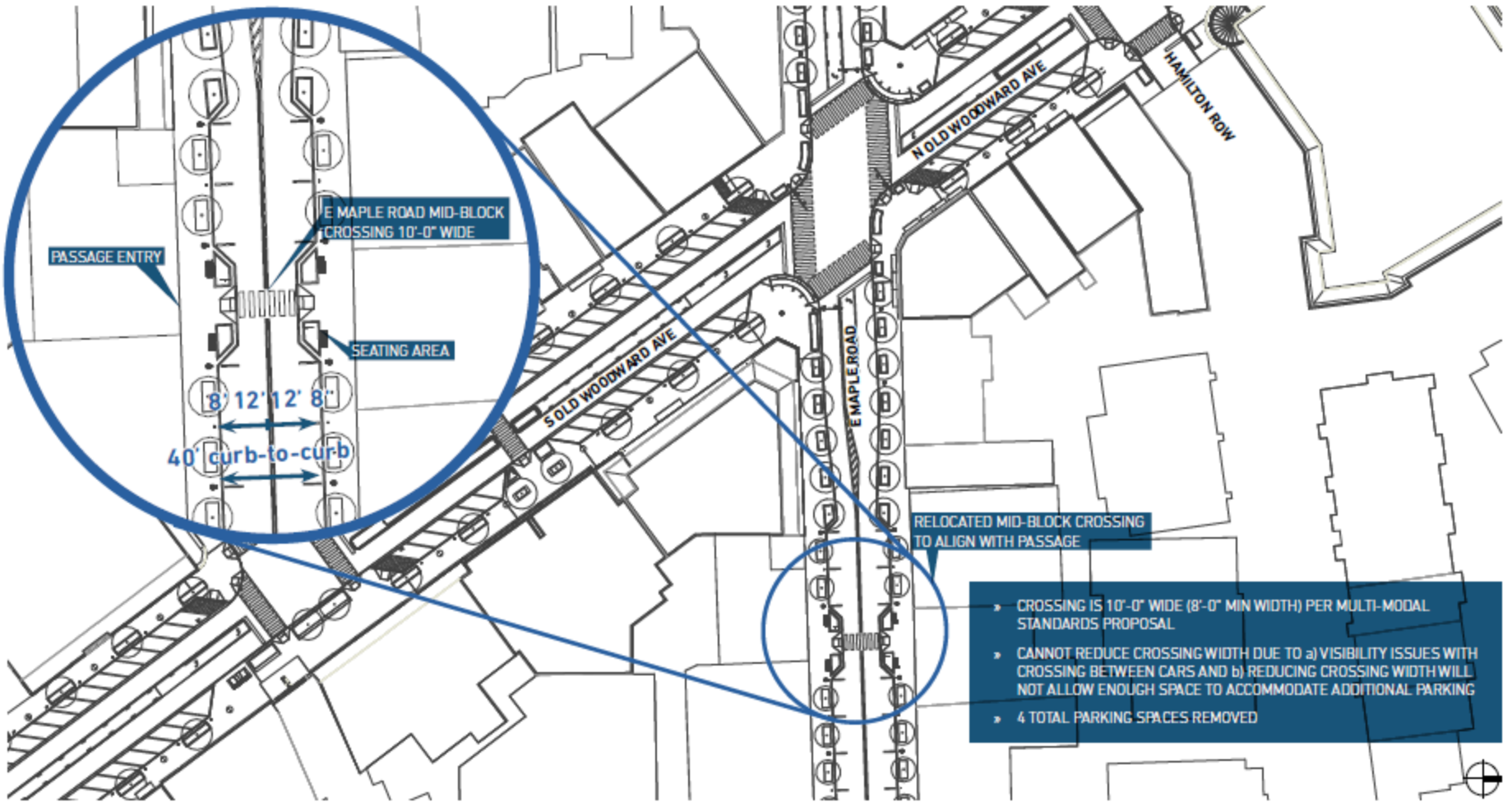












# \* INDIVIDUAL PROJECT FEATURES FUNDING COMPONENTS

## CITY FUNDED -

- \* PUBLIC SEWERS
- \* PUBLIC WATER MAINS/HYDRANTS
- \* STREET PAVEMENT (INCLUDING BRICKS)
- \* MAST ARM TRAFFIC SIGNALS
- \* STREET LIGHTS
- \* COMMUNICATIONS CONDUIT
- \* TRAFFIC CONTROL
- \* MEDIAN LANDSCAPING
- \* SIGNS
- \* PARKING METERS
- \* BUS STOP SHELTERS
- \* BIKE RACKS/NEWSPAPER RACKS



# \* INDIVIDUAL PROJECT FEATURES FUNDING COMPONENTS

## SIDEWALK & STREETScape AMENITIES -

SUBJECT TO 75% SPECIAL ASSESSMENT

- \* SIDEWALK CONCRETE & BRICK SURFACES
- \* TREE WELLS WITH CURBS (CONCRETE OR GRANITE)
- \* SPECIAL SOIL FOR TREES
- \* IRRIGATION SYSTEM
- \* PERENNIAL PLANTINGS
- \* GRANITE BENCHES AND BOLLARDS

## \* INDIVIDUAL PROJECT FEATURES FUNDING COMPONENTS

### THREE LEVELS OF MATERIALS BEING BID -

1. City Downtown Standard with Concrete Street  
\$29 - \$38 per sq.ft.
2. Base Version (as recommended by Planning Consultant) with Concrete Street  
\$32 - \$41 per sq.ft.
3. Custom Version (as recommended by Planning Consultant) with Brick Paver Accented Street  
\$36 - \$45 per sq.ft.

# \* INDIVIDUAL PROJECT FEATURES WHO PAYS FOR WHAT?

## OTHER SPECIAL ASSESSMENTS -

- \* Sewer Lateral Replacement  
(replaces old pipe; applies ~60% of properties)  
Cost about \$75 - \$125 per foot
- \* Water Lateral Replacement  
(replaces  $\frac{3}{4}$ " or lead services with new 1" plastic; applies ~10% of properties)  
Cost about \$50 - \$100 per foot
- \* Fiber Optic Communications Connection - Optional  
(prepares building for future internet upgrades)  
Cost \$1,500 deposit, final cost less than \$3,000



# BIRMINGHAM'S 6-POINT LOGISTICS PLAN

- \* Keep project moving quickly
- \* Keep sidewalks open and front doors accessible
- \* Keep traffic flowing
- \* Keep communications flowing
- \* Keep public parking easy and accessible
- \* BSD Promotional Activities

# 1. Keep Project Moving Quickly

## PROJECT INITIATION

1. Design Process / Bidding Documents
2. Bidding
3. City Commission Authorization
4. Contractor Preparation

## CONSTRUCTION PROCESS

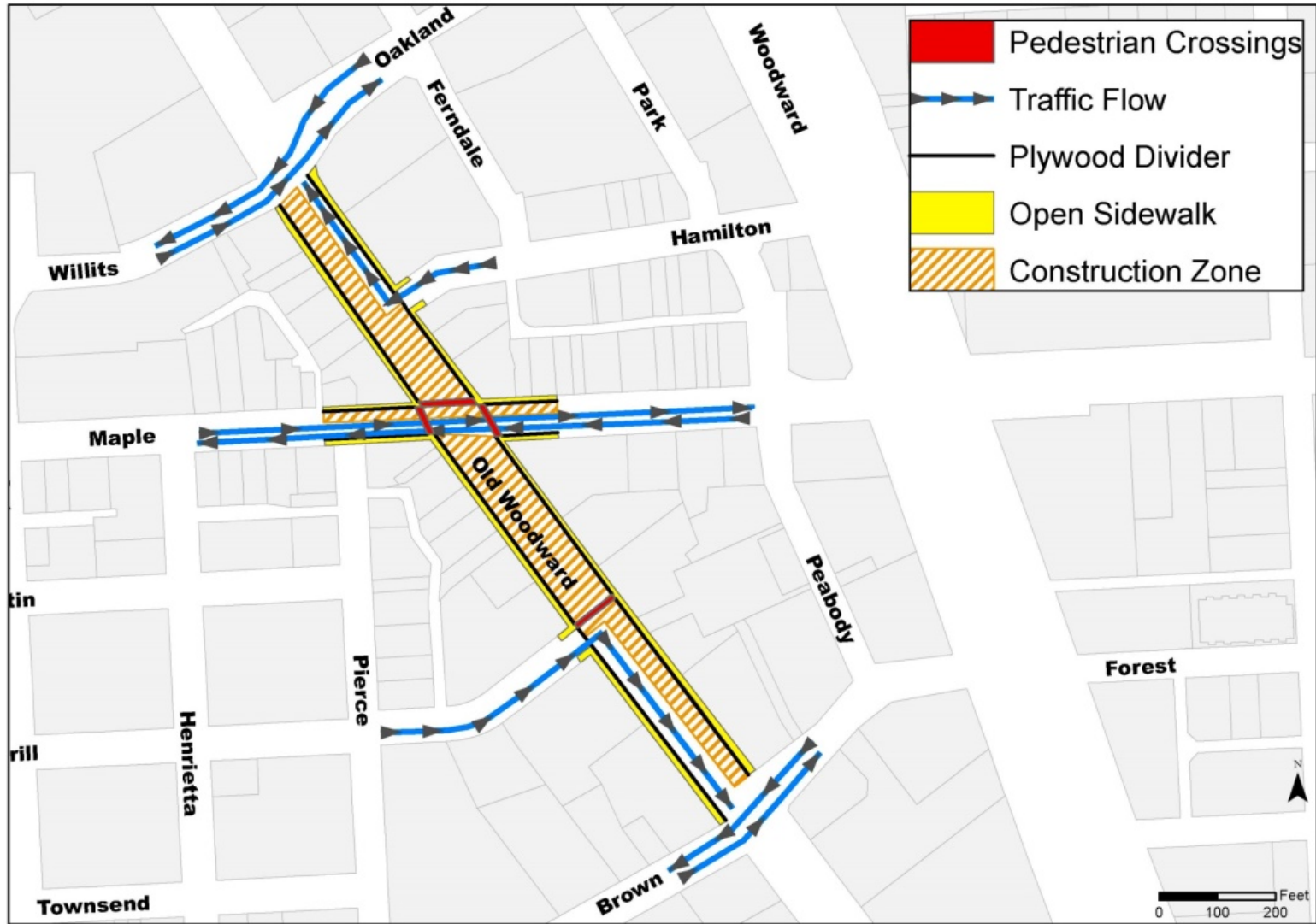
Start - Late Spring/Early Summer

Construction Time Frame - 4 to 5 months

- \* Hire Contractor with Experience
- \* Expand Available Work Hours
- \* Bonus/Penalty Clause
- \* Encourage Multiple Crews

# 2. Keep Sidewalks Open and Front Doors Accessible

## Sidewalk Crossings Routes



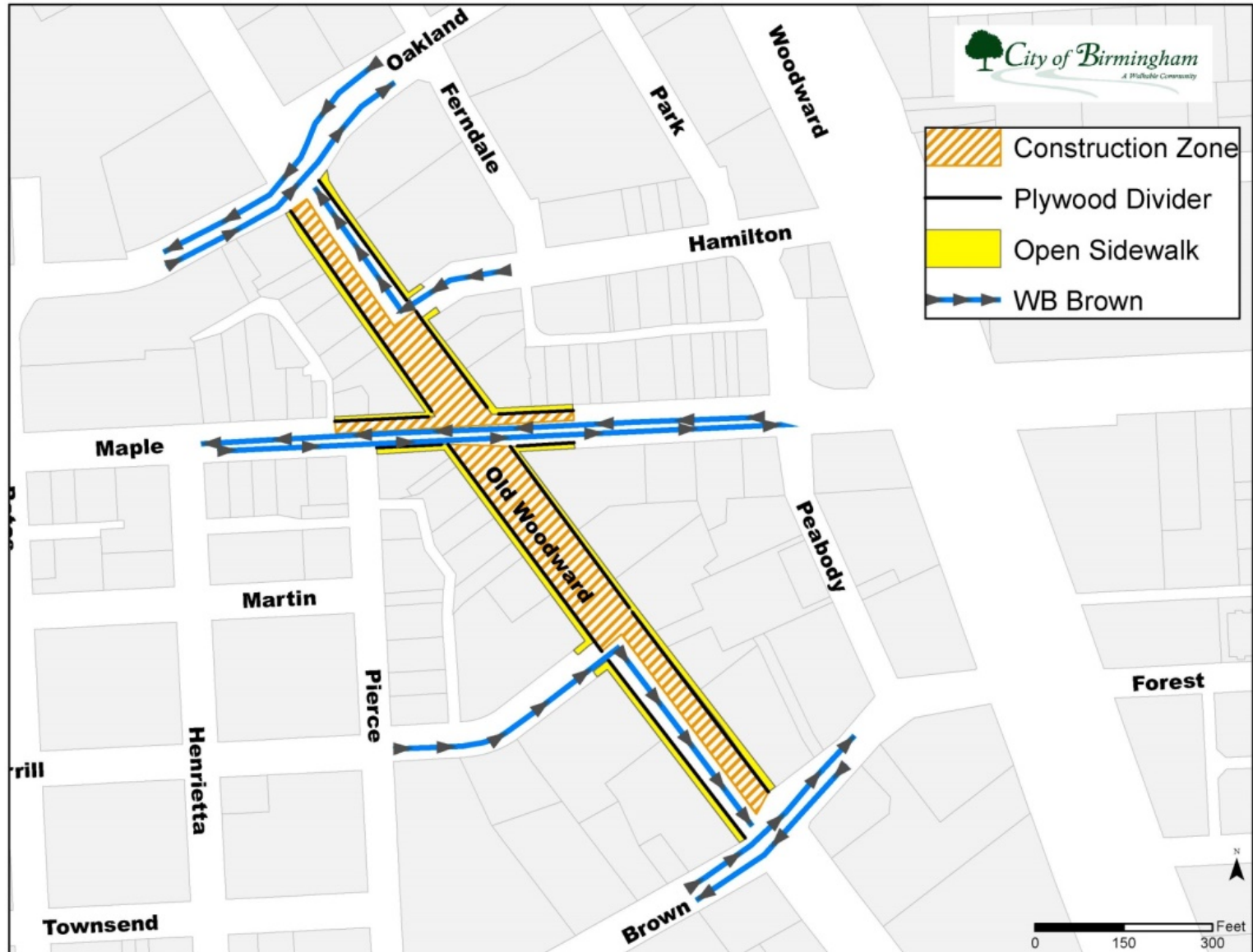


## 2. Keep Sidewalks Open and Front Doors Accessible



Sidewalk Removal and Replacement Goal: 48 Hours

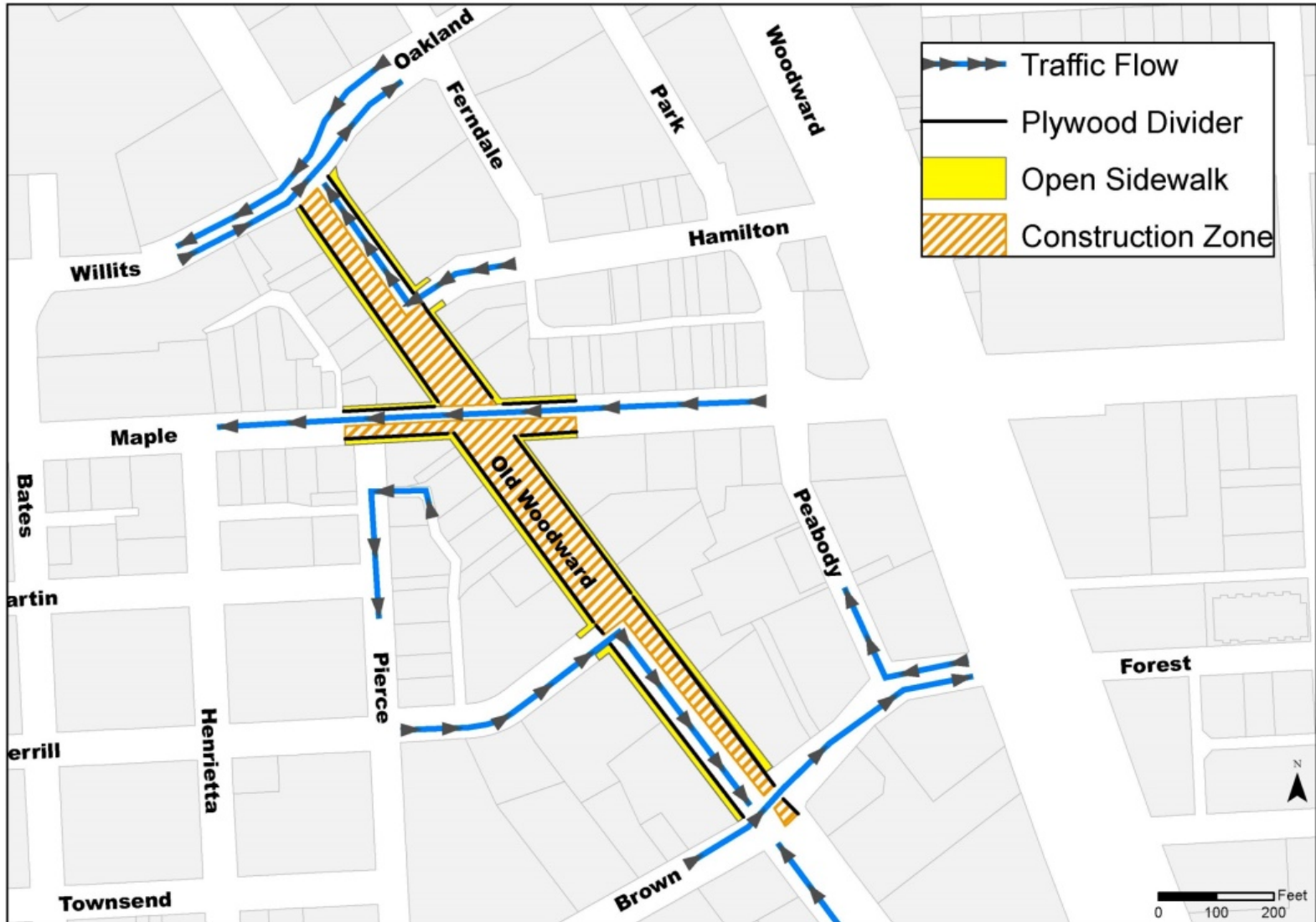
# 3. Keep Traffic Flowing





# 3. Keep Traffic Flowing

## Detour Routes

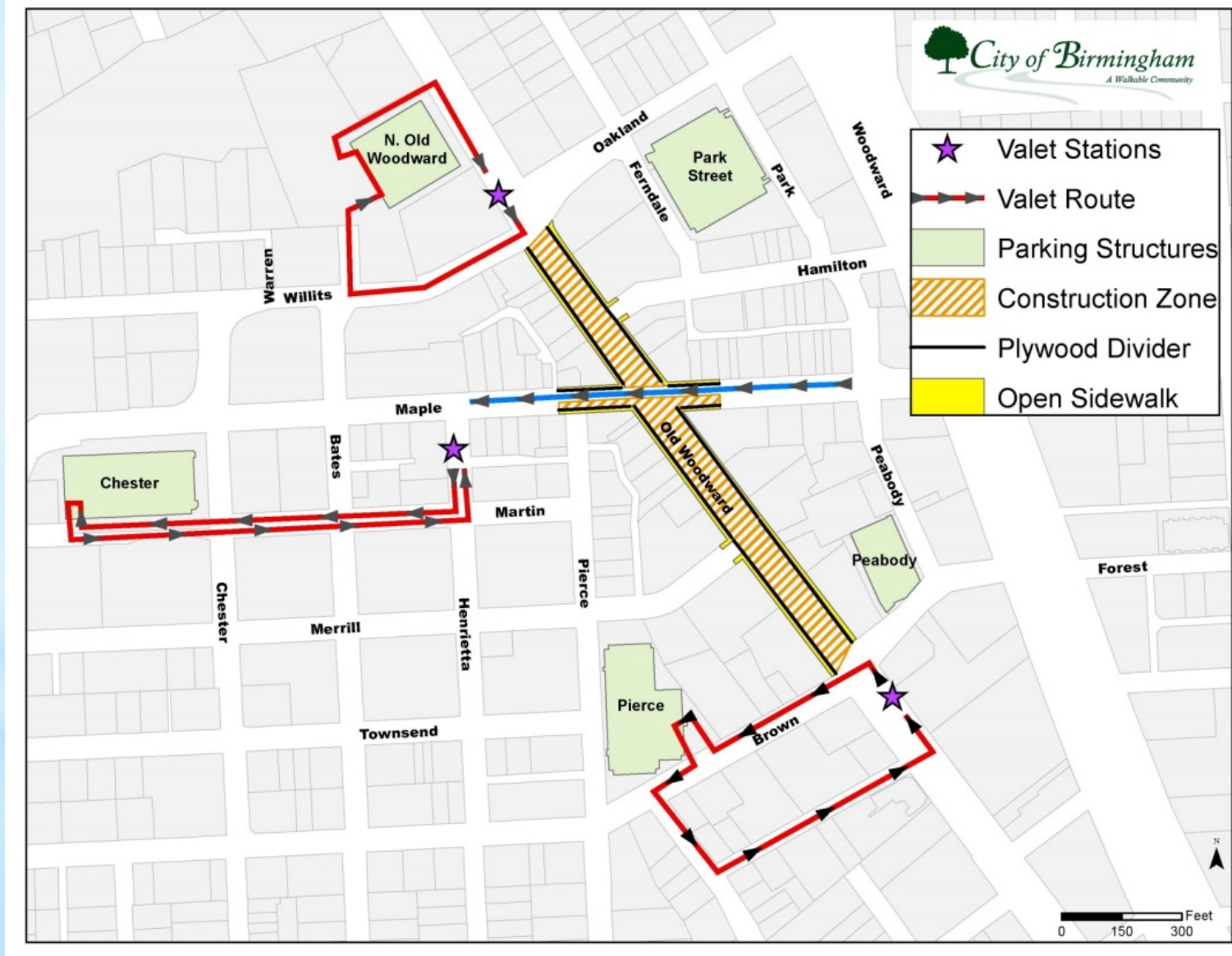




# 4. Keep Communications Flowing

- \* Constant Contact by Email:  
[www.bit.ly/bhamnews](http://www.bit.ly/bhamnews)
- \* Flyers at each Door
- \* City Inspectors and Contractor Foreman on Site
- \* Engineering Dept. at City Hall (248-530-1836)
- \* Police Dept. after Hours (248-530-1870)
- \* Website
- \* BSD/City Social Media

# 5. Keep Public Parking Easy and Accessible





Pay by:  
Coin  
Credit Card  
Debit Card  
Parkmobile

# NEW PARKING METERS







## 6. BSD Promotional Program

- ★ Free Valet Parking
- ★ Enhanced Lighting and Signs
- ★ Activities and Events
  - ☞ Family Day
  - ☞ Cash Mob
  - ☞ Artwork
- ★ Selfie Spot
- ★ Campaign Theme:  
***Pave the Way for a More Beautiful Downtown***



Questions?